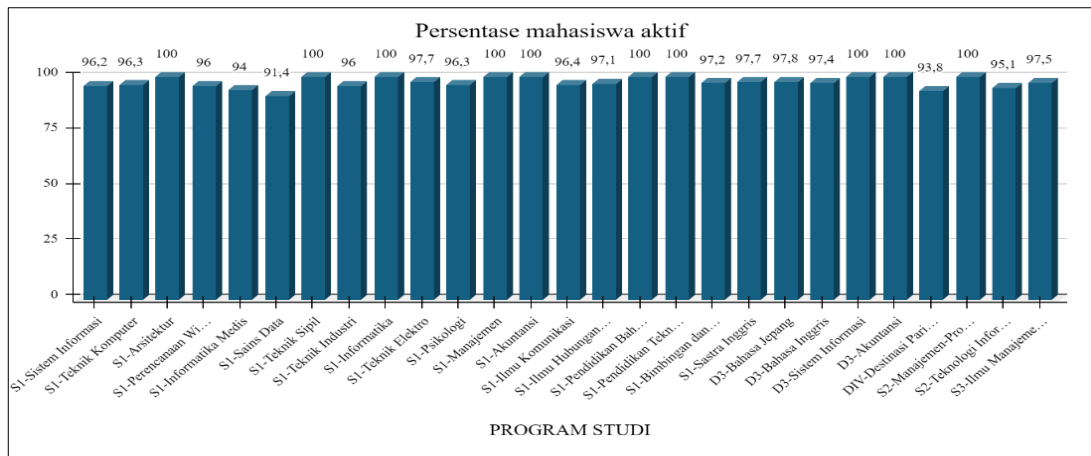


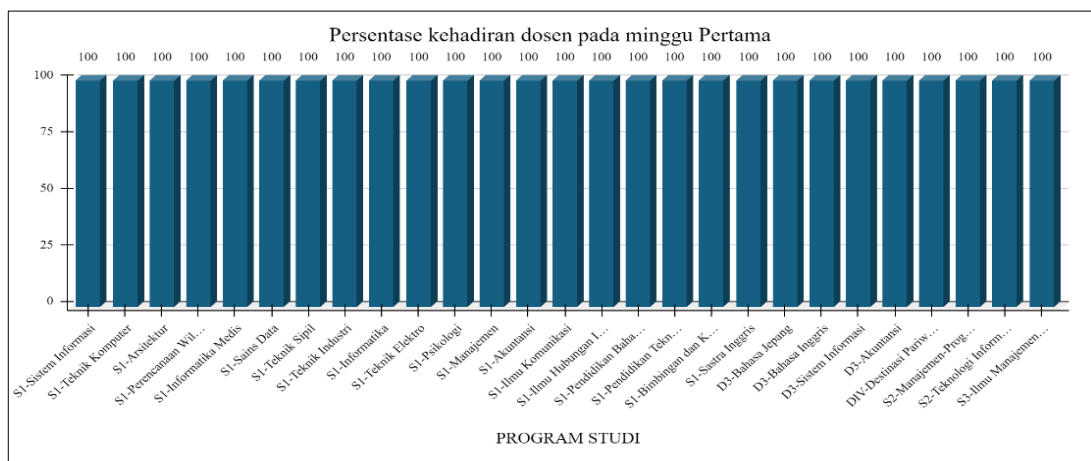
HASIL EVALUASI PROGRAM STUDI SEMESTER GANJIL TA 2021/2022

A. HASIL EVALUASI AWAL SEMESTER

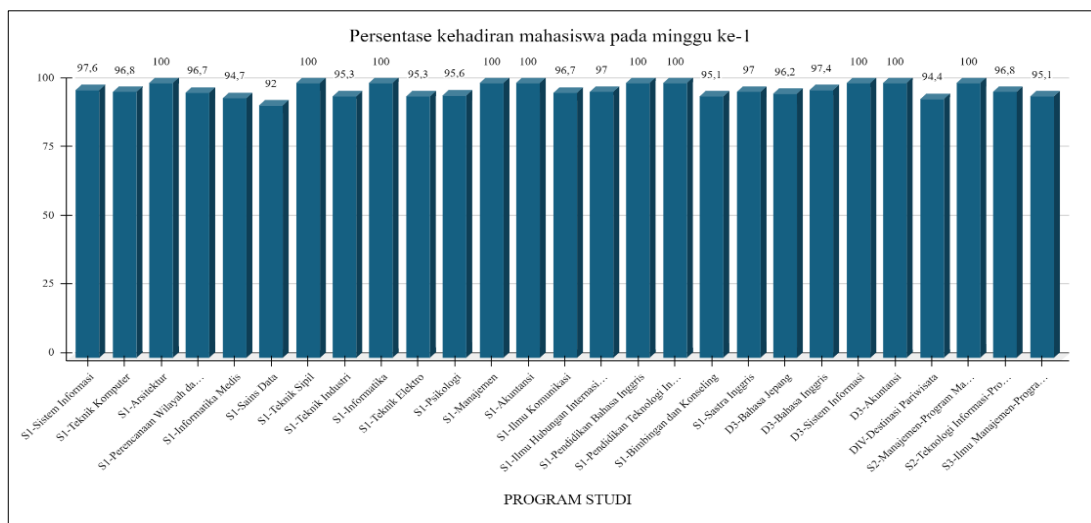
1. Persentase mahasiswa aktif pada periode monitoring



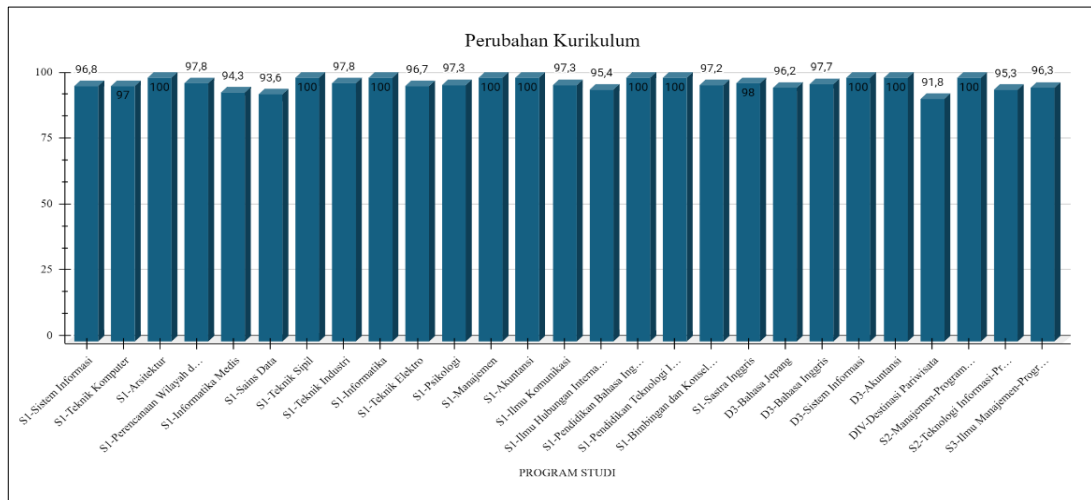
2. Persentase kehadiran dosen pada minggu ke-1



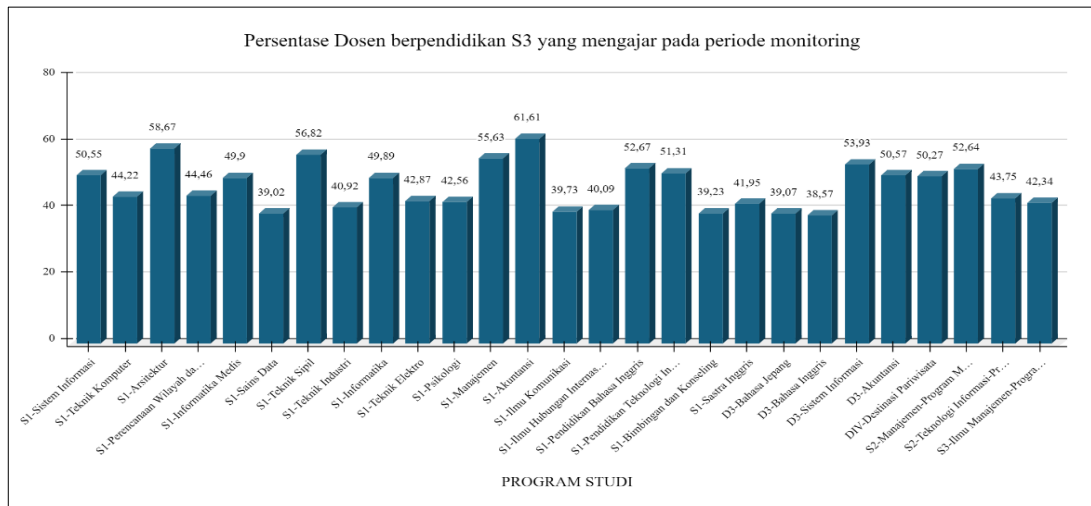
3. Persentase kehadiran mahasiswa pada minggu ke-1



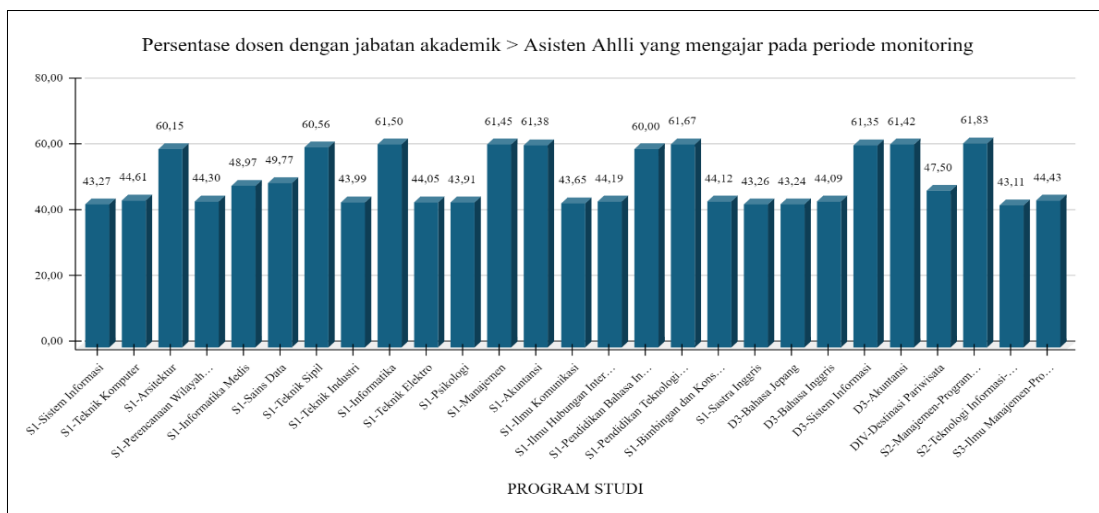
4. Perubahan Kurikulum



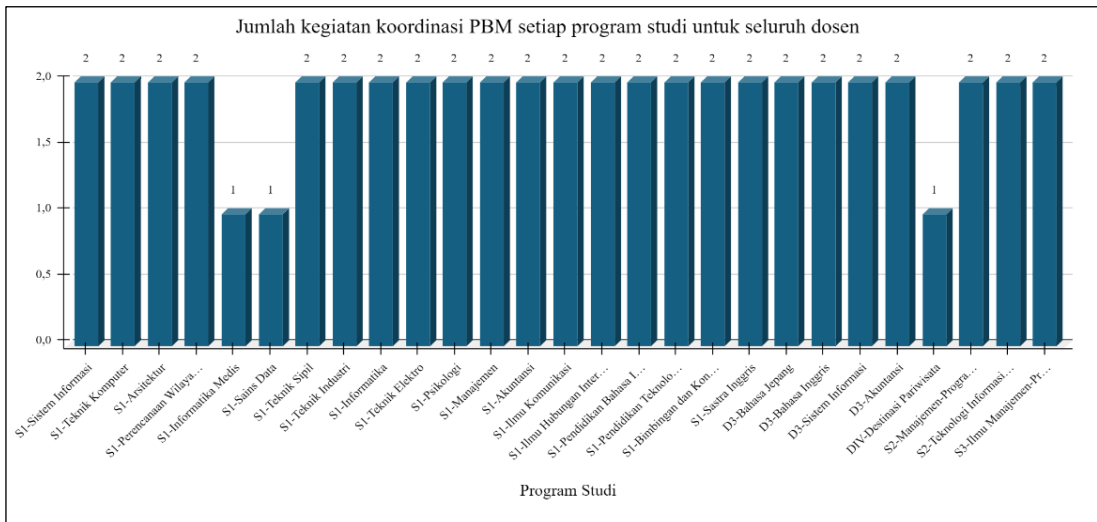
5. Persentase Dosen berpendidikan S3 yang mengajar pada periode monitoring



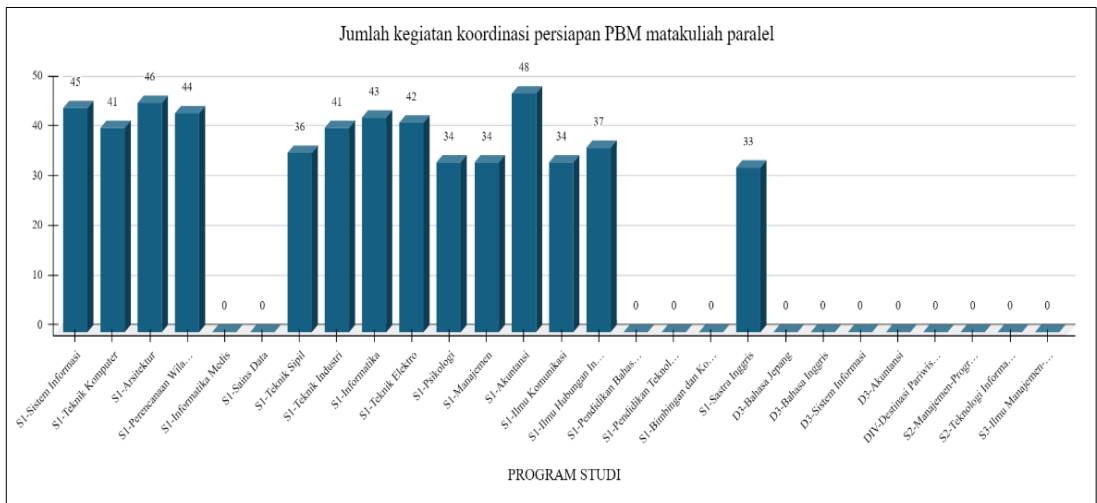
6. Persentase dosen dengan jabatan akademik > Asisten Ahli yang mengajar pada periode monitoring



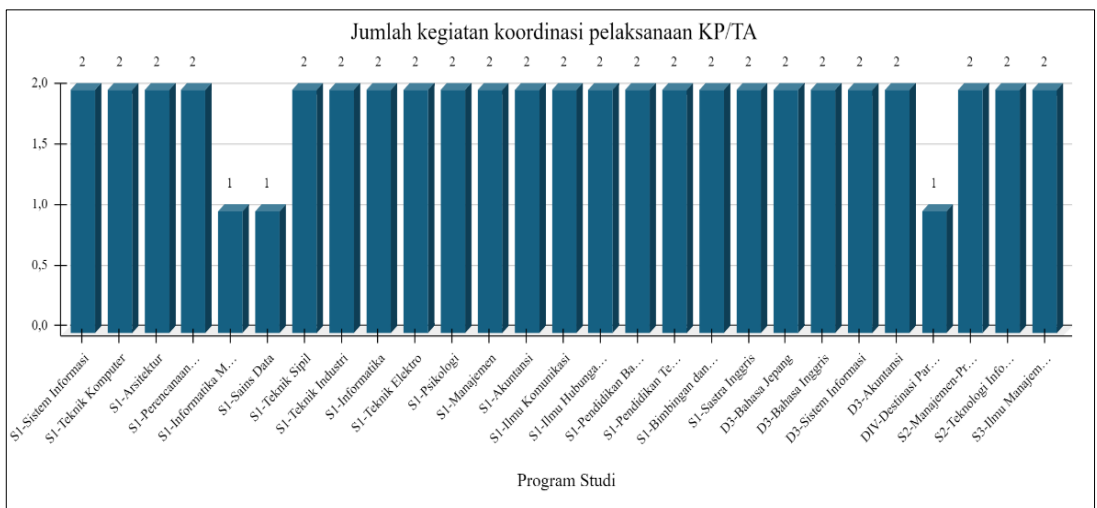
7. Jumlah kegiatan koordinasi PBM setiap program studi untuk seluruh dosen



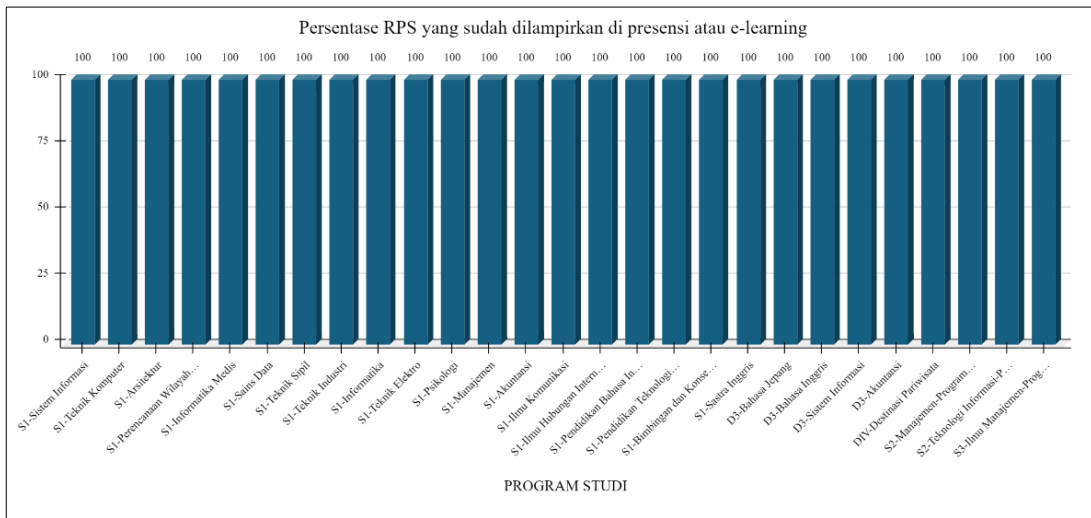
8. Jumlah kegiatan koordinasi persiapan PBM matakuliah paralel



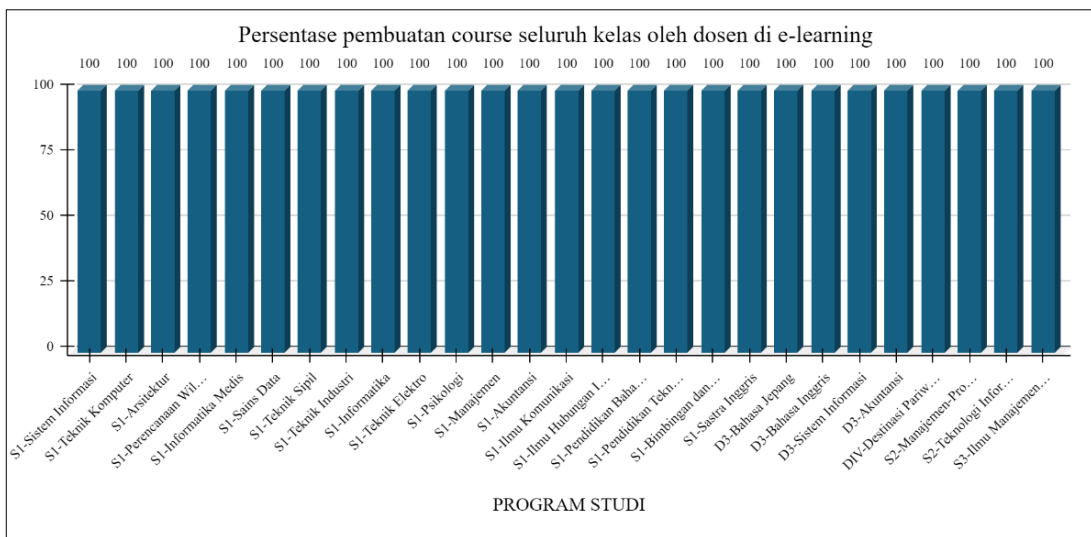
9. Jumlah kegiatan koordinasi pelaksanaan KP/TA



10. Persentase RPS yang sudah dilampirkan di presensi atau e-learning

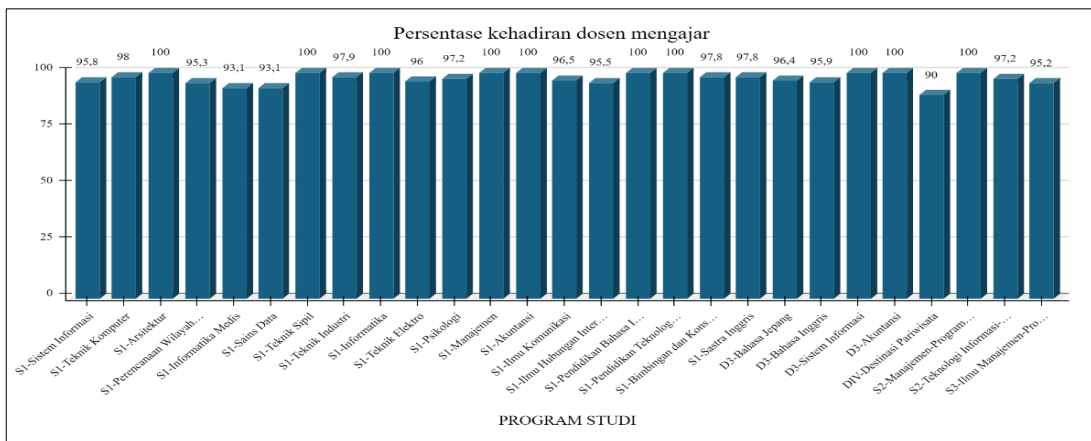


11. Persentase pembuatan course seluruh kelas oleh dosen di e-learning

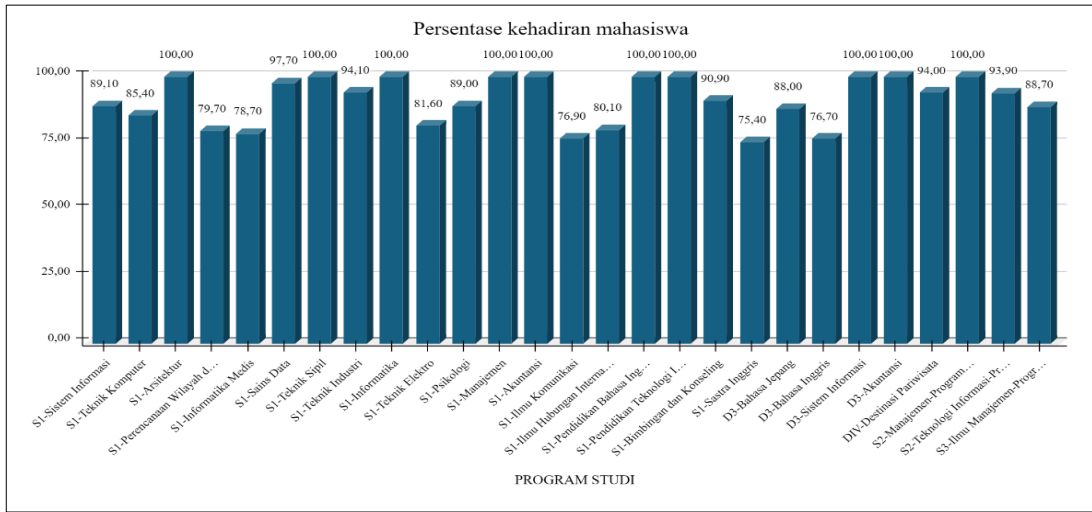


B. HASIL EVALUASI TENGAH SEMESTER

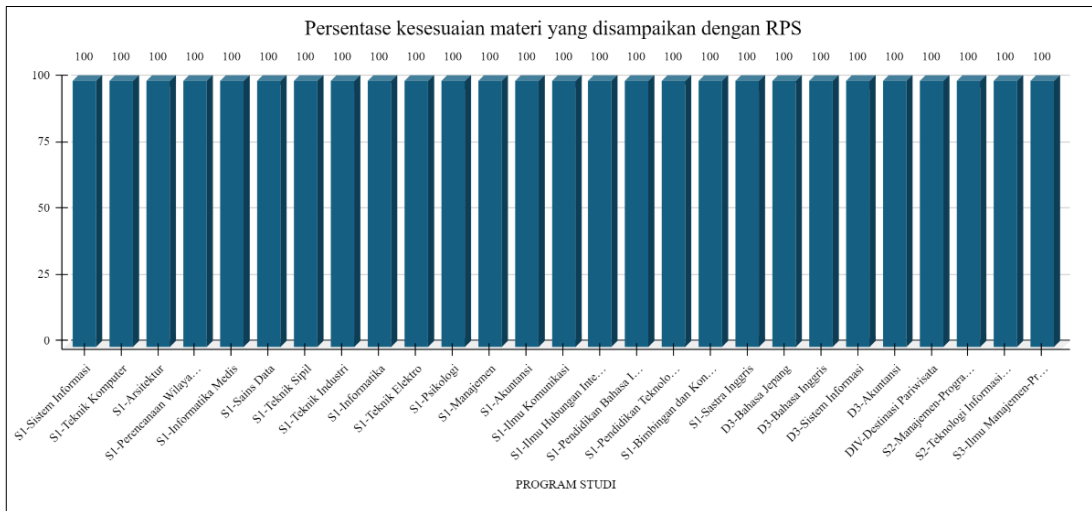
1. Persentase kehadiran dosen mengajar



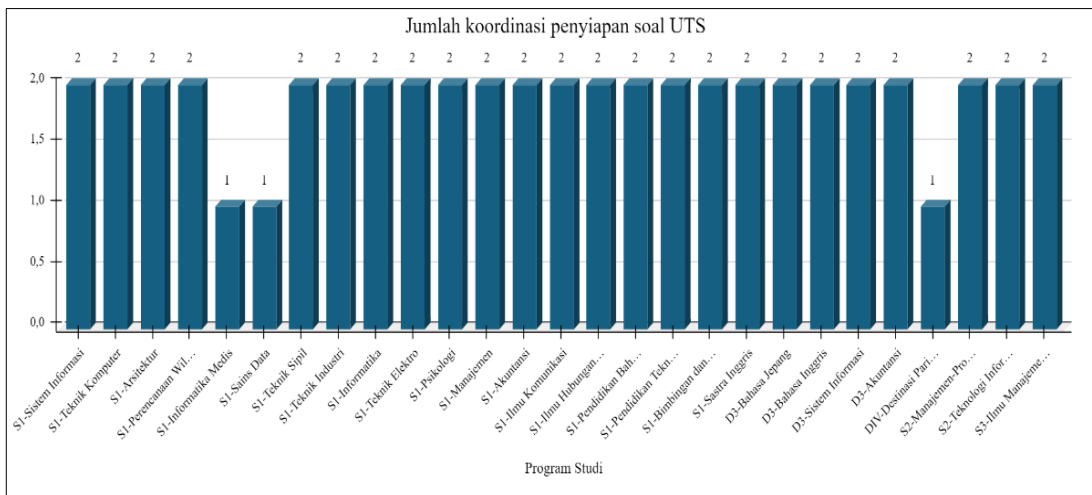
2. Persentase kehadiran mahasiswa



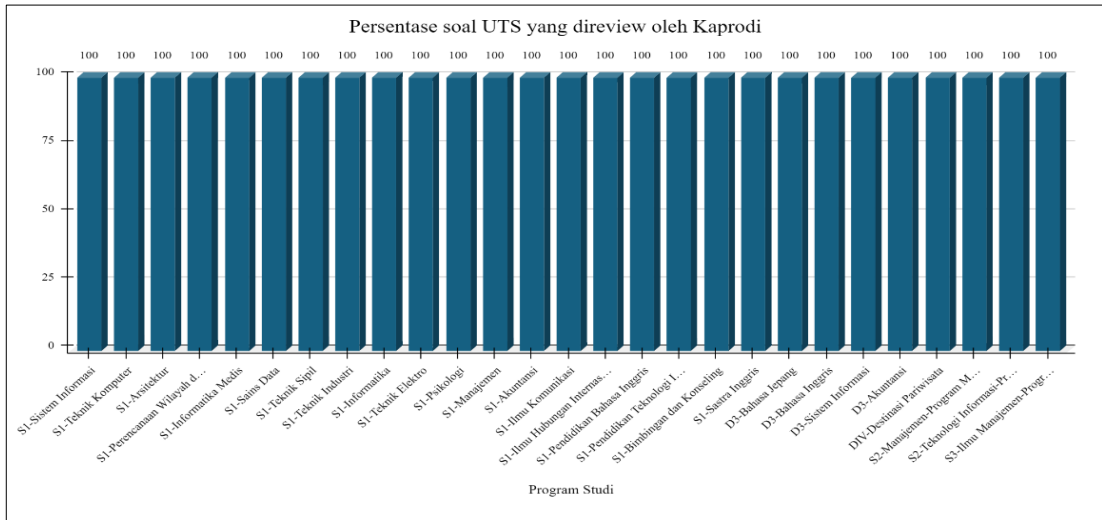
3. Persentase kesesuaian materi yang disampaikan dengan RPS



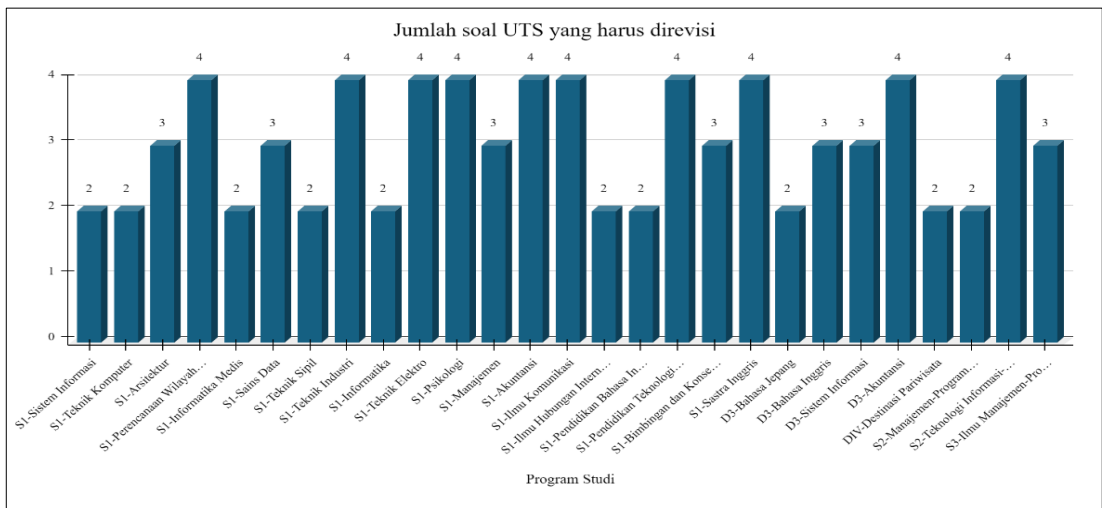
4. Jumlah koordinasi penyiapan soal UTS



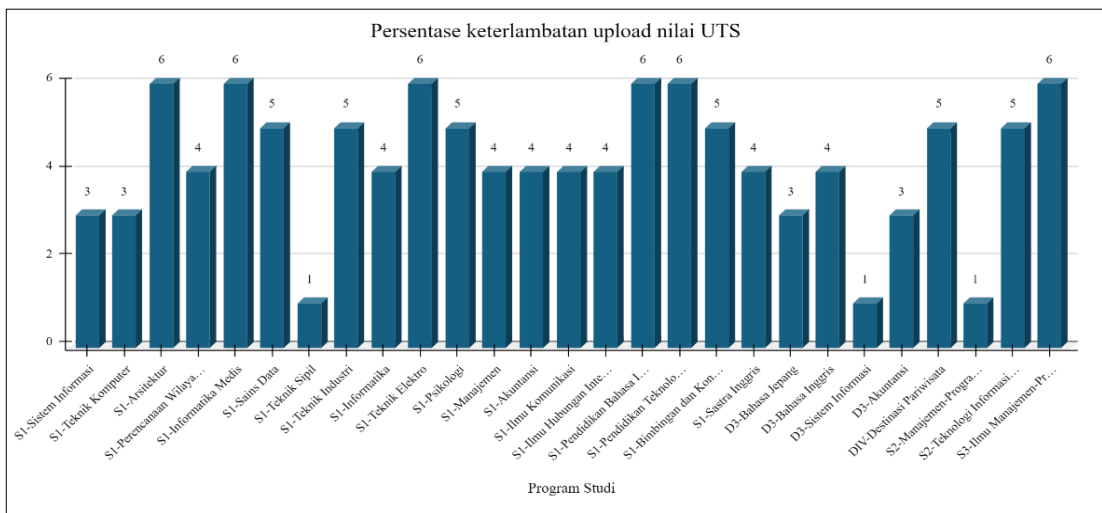
5. Persentase soal UTS yang direview oleh Kaprodi



6. Jumlah soal UTS yang harus direvisi

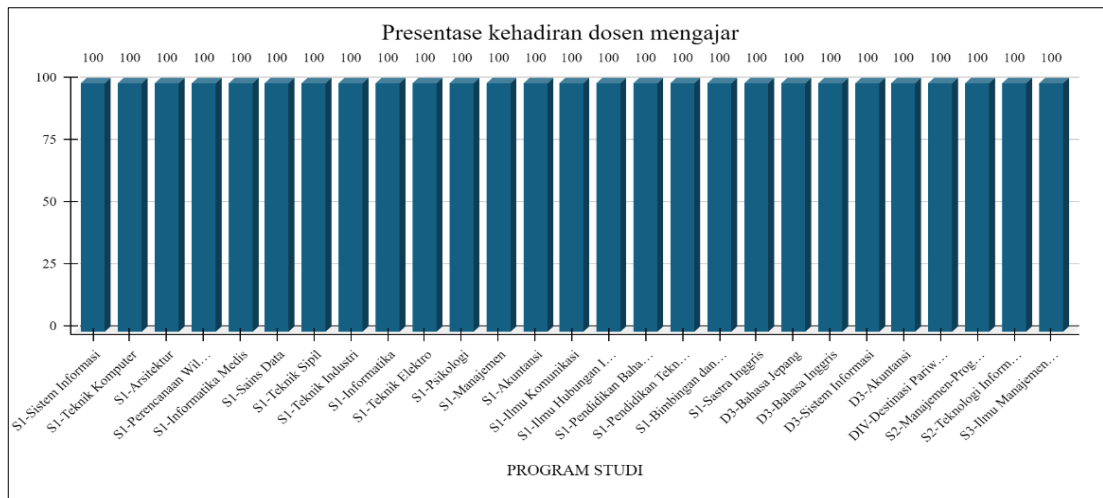


7. Persentase keterlambatan upload nilai UTS

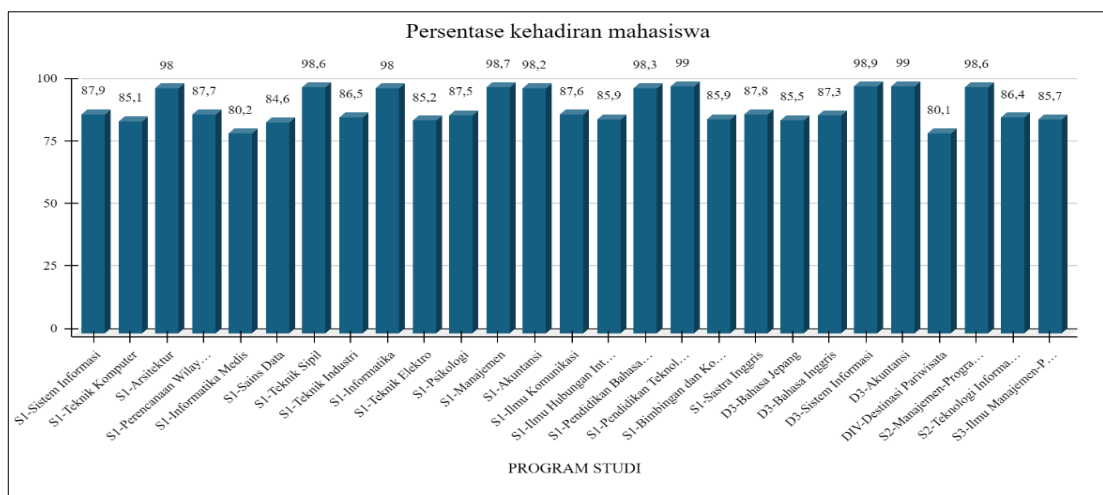


C. HASIL EVALUASI AKHIR SEMESTER

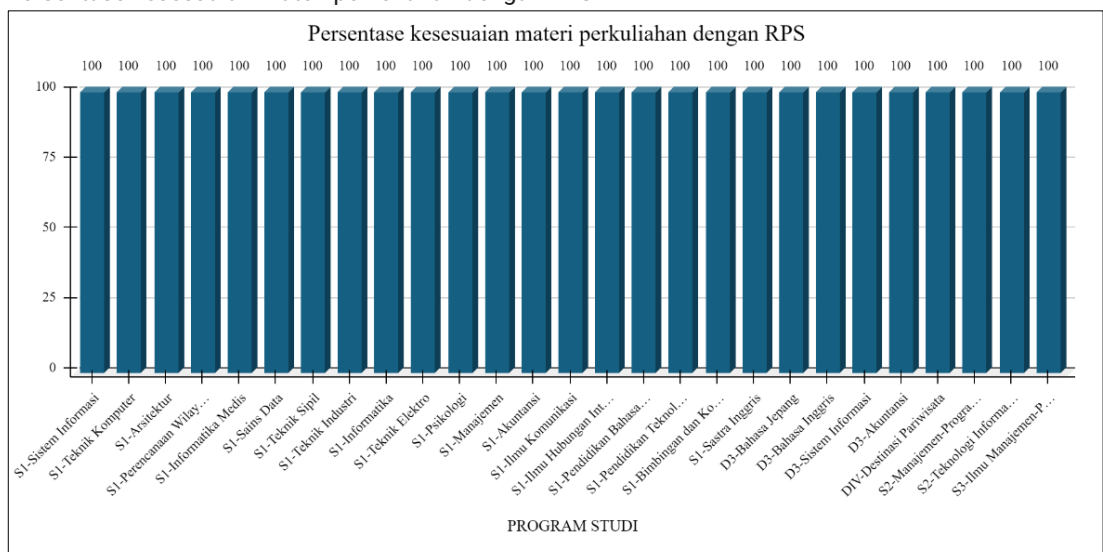
1. Presentase kehadiran dosen mengajar



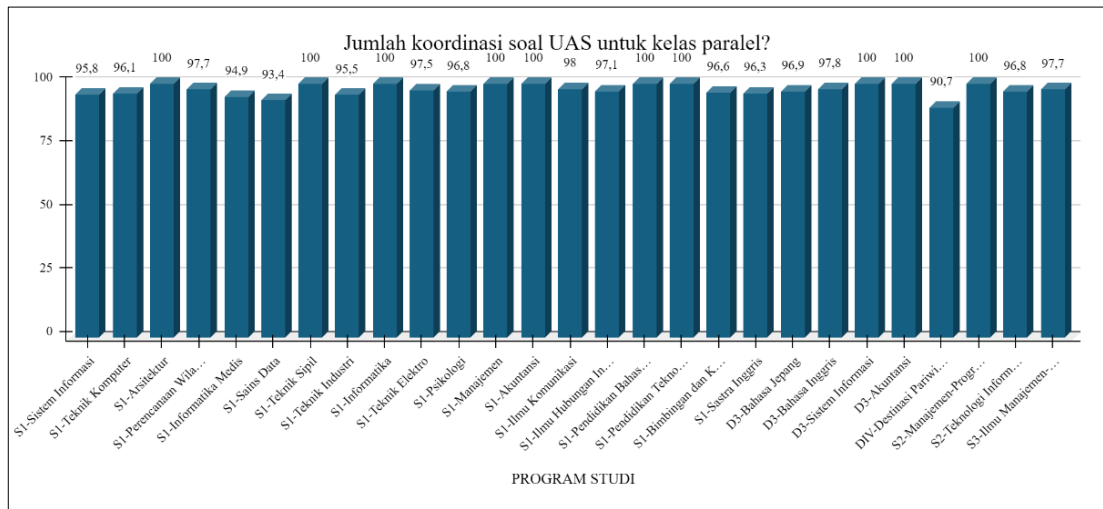
2. Persentase kehadiran mahasiswa



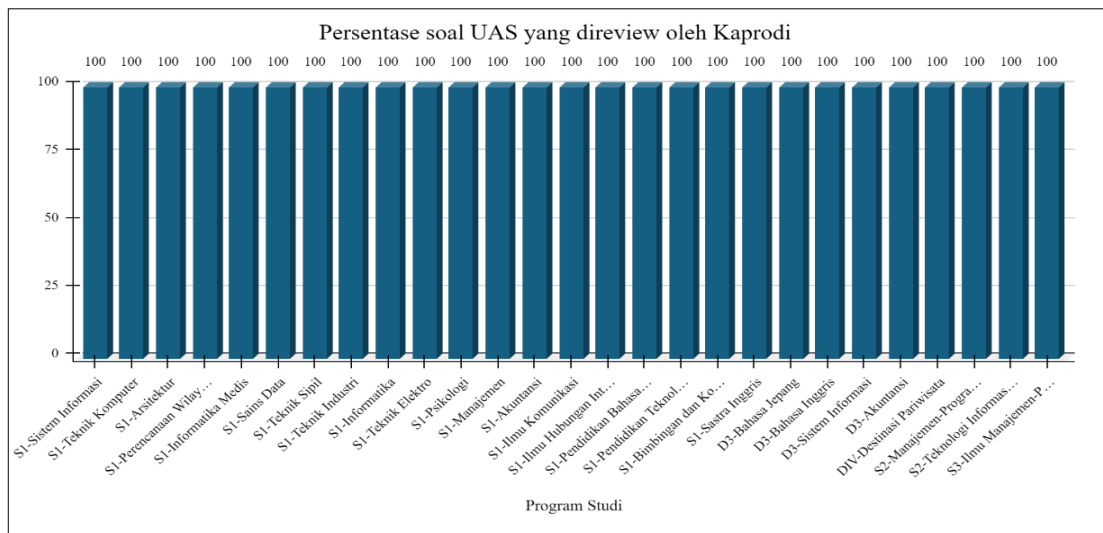
3. Persentase kesesuaian materi perkuliahan dengan RPS



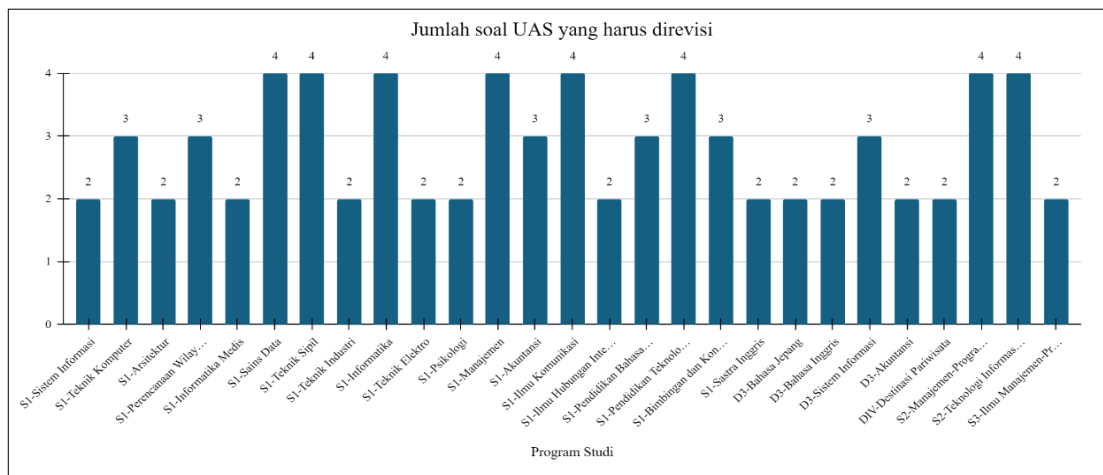
4. Jumlah koordinasi soal UAS untuk kelas paralel?



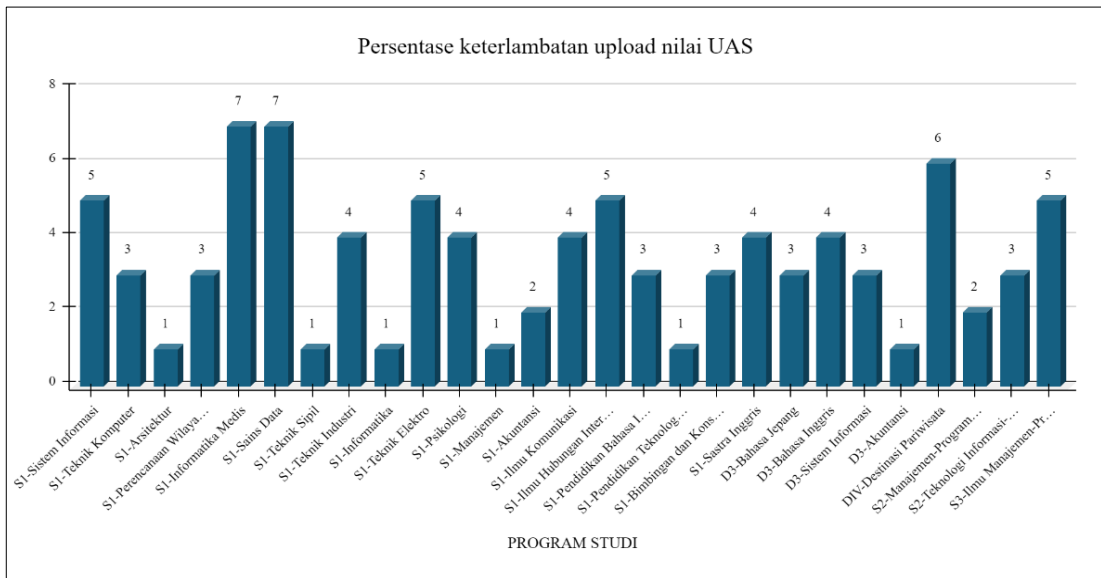
5. Persentase soal UAS yang direview oleh Kaprodi



6. Jumlah soal UAS yang harus direvisi



7. Persentase keterlambatan upload nilai UAS



8. Persentase mahasiswa Tugas Akhir yang melaksanakan ujian pendadaran

